

ISSN:2152-3932

Volume 17 Number 1-2

April 2026

PLANT DISEASES and PESTS



PLANT DISEASES and PESTS

PLANT DISEASES and PESTS

VOLUME 17 NUMBER 1-2 APRIL 2026



Indexed by
Chemical Abstracts(CA)
CAB International (CABI)
Indian Fund for Agricultural Development
Library of Congress
CSA Illumina (ProQuest)
China National Knowledge Infrastructure (CNKI)

WU CHU (USA-CHINA) SCIENCE AND CULTURE MEDIA CORPORATION

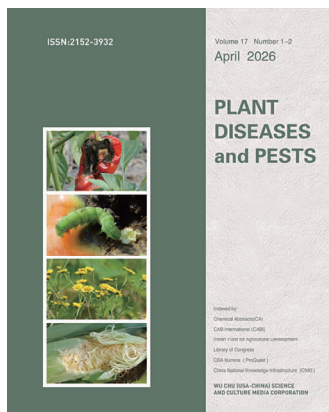
ISSN 2152-3932



7 93573 06567 4

Technique Support:

Anhui Wuchu Media Co.,Ltd.



VOLUME 17 NUMBER 1-2 April 2026

Sponsor

Wu Chu (USA-China) Science and Culture
Media Corporation

Technique Support

Anhui Wuchu Media Co., Ltd.

Edited by

The Journal Board of Plant Diseases and
Pests

Printed by

Allegra Providence RI USA

Editor-in-chief

Zhongxiong LAI

Associate Editor-in-chief

Ping JIN Sanxing HE Zhangqin XIONG

Editors

Jianli YIN Jihong LI

Copy-editor

Sanxing HE

Art Director

Shouhuan ZHU

Editorial Office

USA

650 Ten Rod Road, North Kingstown RI
USA 02852

Tel 401-515-4764

E-mail usachinamedia@yahoo.com

China

S. 40, South Nongke Road, Hefei, Anhui
Province 230031

Tel +86-551-65148112

E-mail zwbchjy@163.com

pdpzwbch@vip.163.com

ISSN 2152-3932

Price \$ 20

CONTENTS

Plant Diseases and Control

- 1 Four Major Diseases Affecting Pear Trees and Their Prevention and Control Methods
Longfei LI, Jintao XU, Minghui JI, Huan LIU, Lijuan GAO, Yue YAO, Gang NIU, Baofeng HAO

Agricultural Chemicals

- 4 Cotton Growth and Yield Quality Responses to the Application of Chemical Topping Agents via Unmanned Aerial Vehicles
Bing CHEN, Zhikun BAI, Jing WANG, Taijie LIU, Jing ZHAO, Qiong WANG, Zijie CHEN, Lexin SUN

Inspection & Quarantine

- 14 Comparative Analysis of the *Ka/Ks* Ratio among Five Closely Related Species in the Subgenus *Bactrocera*
Zhen HUANG, Wentao YU

Agriculture and Forestry Science and Technology

- 17 Analysis of Microbial Community Diversity in the Rhizosphere Soil of Peach Trees
Li LI, Ruiyan LI, Dandan CAO, Chenghui ZHANG
- 22 Ecological Three-Dimensional Cultivation and Digital Development Model of Xinjiashan Specialty Coffee Base
Jiangnan WANG, Yulian MA, Tingting YANG, Caide DUAN, Jin'e LI, Guangxue YANG

Forest Fire Prevention and Control

- 26 Guardians of Heritage Resources: A Preliminary Investigation into the Application of the Intelligent Sentry System in the Mount Tai Scenic Area
Yunwen SUN, Peipei LIU, Simin LI, Shuai ZHANG, Bingzhuo CHEN, Yonghua WANG

Review

- 30 Research Review of Deep Learning Algorithms for Agricultural Disease Image Classification
Shengjiu JIANG, Qian WANG